

Failed appointments represent loss of valuable clinical time and a missed opportunity for another patient to see and orthodontist. It is prohibited to levy any charge for failed appointments in accordance with NHS regulations introduced by the Government on 1st April 2006. However, the regulations allow for treatment to be terminated following 3 missed appointments. Please do not place yourself in such a position, as it will most certainly lead to disappointment, an incomplete result and being unable to be offered NHS care in our practices in future. Rebooking of failed appointments will be done at the next available appointment time, which may not be the most convenient time for you. You should be aware that we may not be able to offer a convenient appointment for you for some time.

Please remember that the majority of our patients are at school and prefer appointments after school. This is obviously impossible from a practical point of view. It would therefore be helpful if you could bring your school timetable with you to enable us to choose an appointment at a convenient time.

If you are happy with your treatment here, why not tell your friends about us? Or post a review on www.nhs.uk/dentist Patients do not need to be referred by a dentist; they can just give us a call and refer themselves.



60-62 high street, harpenden
hertfordshire, AL5 2SP
smile@harpendenorthodontics.com
Telephone 01582 465 200
Fax 01582 465 202

Our office hours are
Mon - Thurs 8:30am - 4:30pm
Fridays 8:30am - 4:00pm

Our surgery hours are
Mon - Thurs 8:00am - 5:15pm
Fridays 8:00am - 4:15pm



13 st peters road, st albans
hertfordshire, AL1 3RU
smile@stalbanorthodontics.com
Telephone 01727 833 304
Fax 01727 763 067

Our office hours are
Mon - Thurs 8:30am - 4:30pm
Fridays 8:30am - 4:00pm

Our surgery hours are
Mon - Thurs 8:00am - 5:00pm
Fridays 8:00am - 4:00pm



Exposure

- An exposure is a minor surgical exposure.
- When a patient has an impacted tooth, it is important to help this tooth grow into the correct position as it may be damaging the roots of other healthy permanent teeth
- We will refer you to your nearest hospital /clinic to have this done either before or during your orthodontic treatment.
- Exposures normally take place under general anaesthetic, as a day case, i.e. you will be able to go home on the same day.

The The canine, or eye tooth, normally erupts into the mouth between the ages of 11 and 13. Sometimes one or both canines develop in the wrong position. Often they lie across the roof of the mouth behind the front teeth. **problem**

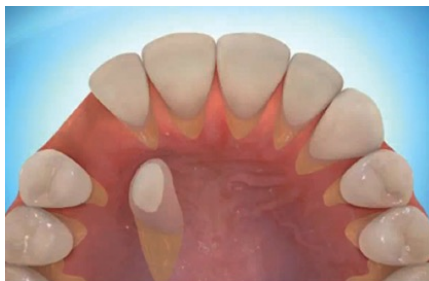


Why do I need treatment?

Because one or the other of your canines is in the wrong place and as part of your on-going orthodontic treatment it is necessary to help the tooth grow normally. If left alone the tooth will not grow normally and may either damage the roots of the front teeth or push them out of position.

What does the treatment involve?

Enabling the tooth to grow normally involves a relatively minor surgical procedure. This usually takes place under general anaesthetic, as a day case, i.e. although you are put to sleep completely you will normally be able to go home on the same day as surgery. While you are asleep the gum lying over the canine tooth will be removed or pushed out of the way.



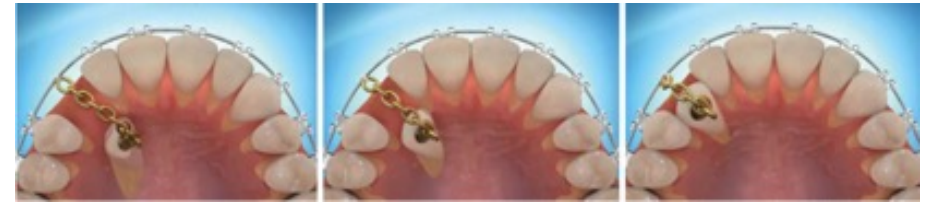
How will the orthodontist pull the tooth into the correct position?

Once the canine is exposed one of two things will usually happen under the same anaesthetic.

A pack - A pack made from gauze soaked in antiseptic is placed over the tooth after it is exposed. The pack is kept in position with stitches and will be removed after a few weeks. You must be careful not to dislodge the pack. If this happens you should contact the department for advice.

Bracket and chain - A small bracket is glued to the tooth. Attached to this is a chain which your orthodontist can then use to pull the tooth into the correct position over the next few months. The chain is usually stitched out of the way but it is quite delicate and therefore it is important to be careful when eating for the first few weeks after surgery.

Stitches are often required at the operation site. However these are usually dissolvable and disappear in two to three weeks.



Will there be much pain or swelling afterwards?

None of the above procedures is particularly painful but you will experience some soreness afterwards. There is usually very little in the way of swelling. If it is likely to be sore your surgeon will arrange pain killers for you. In some situations you may be given antibiotics as tablets, syrup or as a mouthwash.

Will I need another appointment?

You will need to return within 10 days after surgery to have the area checked by your orthodontist. Therefore we ask that you ring us and let us know the date of your planned exposure appointment so that we can pre book for this to be checked within ten days. PLEASE DO NOT GO AHEAD AND HAVE YOUR EXPOSURE DONE WITHOUT RINGING US FIRST.

